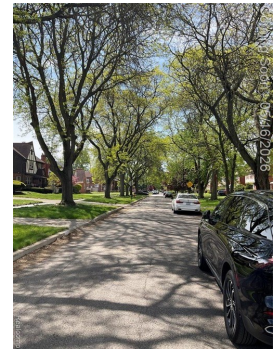
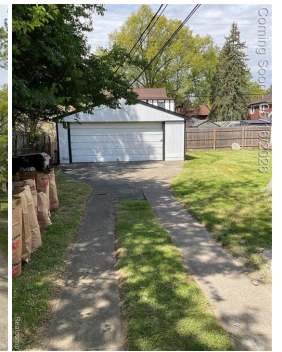




\$ 2,500



15763 Ashton Rd, Detroit, MI 48223

- » Beds: 4 | Baths: 3 Full, 1 Half
- » MLS #: 20261035051
- » Single Family | 2,500 ft<sup>2</sup> | Lot: 7,405 ft<sup>2</sup>
- » More Info: [15763AshtonRdDetroit.IsForSale.com](https://www.realtor.com/realestateandhomes-detail/15763-Ashton-Rd_Detroit_MI_48223)



**Anneta McQueen**  
 (248) 361-1588  
[neta4creativetouch@gmail.com](mailto:neta4creativetouch@gmail.com)



RE/MAX City Centre  
 17515 W. 9 Mile Road  
 Suite 800  
 Southfield, MI 48075  
 (313) 528-3002

Remarks

Experience the perfect blend of historic prestige and modern luxury in this stunning North Rosedale Park residence. Bathed in natural light, the grand living and dining areas showcase the timeless architectural beauty of one of Detroit's most coveted neighborhoods. The home's centerpiece is the 2025 third-floor primary retreat, a lavish, newly completed sanctuary featuring a full private en suite. In total, the residence offers four spacious bedrooms, including a second suite with its own full bathroom (perfect for guests or a growing family). Designed for both comfort and style, the home features: Modern Climate Control with a two-zone central air and heating system for year-round efficiency. A kitchen equipped with a stove, refrigerator, dishwasher, and microwave (with washer/dryer negotiable). Space to Play: A partially finished basement with ample storage and a dedicated area for movie nights or sophisticated entertaining. Convenience: A detached two-car garage that comes in handy when it snows in Michigan. From the 2025 updates to the classic Rosedale charm, every detail of this home has been curated for comfortable living. Dogs are allowed however there is a 50 pound maximum weight limit and breed restriction (no Pitbulls or Rottweilers). The current alarm system is included

